

Technical Visits

Häme

Hämeenlinna • Riihimäki • Forssa



Product Manual





Häme is full of innovation and opportunities

Kanta-Häme, or Häme for short, is one of the 19 Finnish provinces, and it is located in Southern Finland, an hour's drive from Helsinki, Turku, and Tampere. Geographically, Häme is part of the Finnish Lake Region, with inland bodies of water covering 508 km² of its total area of 5 707 km².

Häme is a unique place. It is the heartland of fortunate people, where nature and cultural vistas combine for a significant impact – in one breath, you can enjoy the clean air, water, verdant environment, history, culture, and great services.

We welcome You to learn more about the businesses of Häme

Häme welcomes everyone to learn more about the innovative businesses in the region.

This manual includes a collection of visitor packages for professionals, students, and groups of various sizes. We offer our guests the opportunity to peek behind the curtain for a closer look at the activities of the business. Visits are available in various industries including handcrafts, textile industry, technology, and circular economy. In addition to visits, you can also book appointments with other businesses in the region. Visits can be customized based on the group's wishes with the help of local experts.

Visitor groups are primarily welcomed on weekdays, as the schedules of the businesses permit. We ask that you inquire about your possible visit in good time, and preferably at least one month before the desired date either by contacting the business directly or through a local tour operator.

Hämeenlinna Region

Hämeenlinna has a versatile economic structure. The largest lines of business include the industry, retail trade, and construction. Manual skills and more traditional artisanal trades are still a significant element of the economic structure in the historic Hämeenlinna region.

Industrial Park More in Hämeenlinna is one of the largest business parks in Finland, and it leads the way in responding to the expectations and challenges set for the industrial parks of the future in Finland.

Iittala Village is famous for handcrafts, design, and art, and each year it welcomes more than 100 000 domestic and international visitors enriching the vitality of the entire village.

Riihimäki Region

Riihimäki is the home of culture, robotics education, and encounters. The spirit of Riihimäki is based on its exciting history supported by the railway,

the garrison, and the glass industry. The city is particularly known for glass and glassblowing.

The economic structure of Riihimäki is very versatile including, among other things, businesses in the high-technology, ICT, and environmental sectors, as well as metal, food, and sawmill industry.

Forssa Region

Forssa is known for business activities and expertise in the fields of construction product manufacturing, electronics, printing trade, metal, food industry, and environmental sector. Key sectors include environmental business activities and energy, wellbeing, green logistics, and technology.

The region is home to professionals from the research and specialist organization of Natural Resources Institute Finland (Luke) and various business competency clusters. The Envitech Area in Forssa is one of the most versatile environmental expertise clusters in Europe.



Arrival to Häme



Häme comprises a sub-regional unit of three cities. The easiest way to access Häme is by using public transport when arriving at Hämeenlinna, Riihimäki, or Forssa. Häme is easily within reach, and Helsinki, Tampere, and Turku are just an hour away.

BY TRAIN

You can reach Häme by train from Helsinki, Tampere, or Turku. There is also a railway connection to Häme from the Helsinki Airport. Train stations in Häme along the Helsinki–Tampere rail link include Riihimäki, Ryttylä, Turenki, Hämeenlinna, Parola, and Iittala. The station of Humpvila is located on the Turku–Tampere rail link.

BY BUS

Häme can be reached from anywhere in Finland by bus. Buses can also take you easily to the smaller municipalities in Häme.

BY CAR

You can arrive or move around the region easily with a car. You should plan your route in advance using a map service, as this will allow you to stop at interesting locations along the way.

BY AIRPLANE

The Tampere-Pirkkala and Helsinki Airports are just an hour away from Häme. The Helsinki Airport also offers train service to Hämeenlinna and Riihimäki. The Tampere-Pirkkala Airport is only an hour away from Hämeenlinna.

BY BOAT

The Helsinki and Turku ports are only an hour away from Häme. Ships arrive at Helsinki and Turku regularly from Sweden, Estonia, and Germany.

TRAVEL TIME TO HELSINKI BY AIRPLANE

- | | | | |
|--------------|-----------|--------------|------------|
| 1. New York | 9 hours | 7. Stockholm | 1 hour |
| 2. Madrid | 4,5 hours | 8. Delhi | 7 hours |
| 3. London | 3 hours | 9. Singapore | 12 hours |
| 4. Paris | 3 hours | 10. Beijing | 9 hours |
| 5. Frankfurt | 2,5 hours | 11. Seoul | 9,5 hours |
| 6. Rome | 3,5 hours | 12. Tokyo | 10,5 hours |



TRAVEL TIME FROM HELSINKI BY TRAIN

- | | |
|-------------|------------------|
| Hämeenlinna | 1 hour 8 minutes |
| Riihimäki | 47 minutes |

TRAVEL TIME FROM HELSINKI BY BUS

- | | |
|-------------|-------------------|
| Hämeenlinna | 1 hour 20 minutes |
| Riihimäki | 54 minutes |
| Forssa | 1 hour 55 minutes |

Local Tour Operators at Your service

FMT – Forssa Travel Agency Ltd

FMT is a privately owned Full Service Destination Management Company founded in 1977. Company's main office is in Forssa which is located in the centre of the triangle, joining the main cities in the south of Finland Helsinki, Tampere and Turku. FMT offers a wide variety of ground services in Finland, Scandinavia and the Baltic countries. FMT has received a respectful and highly professional status within the travel business and reputation of providing the highest quality of products and services.

FMT's main idea is to produce special interest tours, educational tours as well as leisure tours for different organizations, associations, schools and enterprises according to their wishes, desires and budget.

FMT has a strong and wide international network. FMT is a member in Association of Finnish Travel Agents (AFTA) and International Air Transport Association (IATA).

Experienced and skilled staff is at Your service on technical visits and educational tours to Finland and Häme region.



Managing Director
Ms. Mari Rauhaniemi
Tel. +358 3 435 5671
mari.rauhaniemi@fmt.fi

FMT – Forssa Travel Agency Ltd

Kartanonkatu 9
30100 Forssa, FIN
www.fmt.fi/english

Tel. +358 3 435 5670
fm.myynti@fmt.fi

Travel Agency Häme-Matkat Ltd

Häme-Matkat is a Full-service Travel Agency in Hämeenlinna that has served customers for more than 40 years. The small local operator provides a personal service and packages created with extensive experience.

Häme-Matkat can help you with flights, transportation, and activities and additional services that complete the program for your visit.



Managing Director
Ms. Arjaliisa Arra
Tel. +358 3 675 9331
toimisto@hame-matkat.fi

Travel Agency Häme-Matkat Ltd

Kasarmikatu 6
13100 Hämeenlinna, FIN
www.hame-matkat.fi

Tel. +358 3 675 9331
toimisto@hame-matkat.fi

Sites

ENVIRONMENT AND RECYCLING

Biotus	9
Envor Group	10
Uusioaines	11

TECHNOLOGY AND MANUFACTURING

DA-Group	13
Trifami 3D	14
LeikkiSet	15
Aste Finland	16
Coolcenter Forssa	17
CN Center	18
Delva	19

TEXTILES

Foxa	21
C.P.E Production	22
Oy Teema Line LTD	23

WELLBEING AND NATURE

Iloranta	25
Pirteeks	26
SmartDOG	27
Ravitalli Tapio Mäki-Tulokas	28

HANDCRAFTS AND DESIGN

Forssa Fabric / Rykkeri.....	30
Wetterhoff	31
Wirkkala Wallpaper / Culturelli	32
Lasistudio Mafka & Alakoski	33
Yoldia Scandinavia	34
Puista	35
Ilosen Puutyö	36
Nasty Puppet Promotions	37
Lepaan viinitilavierailu ja Petäys Resort	38
Panimo Olutmylly	39
Kirsin suklaat	40
Kultasuklaa	41

ENVIRONMENT AND RECYCLING



Biological plant protection

Organic farming

Environmental protection



Biotus

Biotus offers biological plant protection products. The company produces predatory mites and imports beneficials for the use in greenhouses, tunnels, and open-field strawberries. Additionally, the company offers biological products for plant diseases, glue traps, and various pheromones for monitoring garden and forest pests. Biotus also offers products to home gardeners.

Research and product development are an important part of the activities of Biotus. Cooperation with scientists, experts, producers, and customers plays a key role. As a result, the company creates both new products and new applications for existing products.

Biotus is a member of IBMA (International Biocontrol Manufacturers' Association) and IOBC (International Organization of Biological Control).

During your visit, you will learn more about the company and biological plant protection in general, which the company aims to promote through its activities. After a general introduction, the visitors will be divided into smaller groups and shown around.

Price	€50/person
Duration	1–1.5 hours
Language	FI/EN/NL
Schedule	Weekdays, not during holidays
Group size	5–25 people
Visitor group	Greenhouse farmers, open-field farmers, schools and educational institutions, and advisory bodies.

Location	Tiilenlyöjänkatu 5, 30100 Forssa
Website	www.biotus.fi
Contact Person	Mr. Jan Hulshof
Contact information	+358 40 571 8322 jan.hulshof@biotus.fi

ADDITIONAL VISITS

Boreal Kasvinjalostus

◆ 11 km 🌐 www.boreal.fi/eng
Breeds new varieties of field crops for use in Finland and other areas with similar conditions.

Natural Resources Institute Finland

◆ 10 km 🌐 www.luke.fi/en
One of four headquarters of Luke, which is a research and specialist organization of the Ministry of Agriculture and Forestry of Finland, is located in Jokioinen.

Lepaa Horticultural Institute

◆ 73 km 🌐 www.hamk.fi/campuses-and-maps/lepaa/?lang=en
Training and education for horticulture and built environment specialists.



Envor Group

Envor Group is a pioneer of the Finnish circular economy. The company aims to conserve natural resources by offering businesses and households services for responsibility and the promotion of circular economy.

This third-generation family-owned business began utilizing waste materials in the 1960s by recycling scrap metal and collecting wastepaper. In the 1970s, the recycling of glass for industrial purposes was introduced, and services for waste and property management were added to the company's portfolio along with the processing of biowaste for soil and fertilizer products in the 1990s. In 2018, the company began recycling household waste and the biogas plant, completed in 2008, was set up as a two-line plant. The plant was among the first joint processing plants for biowaste and sewage sludge on the industrial scale in Finland.

Today, more than 98% of the waste processed by the company is reclaimed for use. The company is always developing new recycling techniques and technologies in order to promote the utilization of waste materials.

A visit to the company begins with a presentation in the conference room, which includes information on the company and its activities intended to promote recycling and circular economy. The tour continues outside, where visitors learn more about the various recycling processes.

ADDITIONAL VISITS

Loimi-Hämeen Jätehuolto

📍 100 m 🌐 www.lhj.fi

A waste management company owned by 16 municipalities that offers various circular economy solutions and services.

Uusioaines

📍 5 km 🌐 www.uusioaines.com/en

Collects, cleans, and recycles glass and produces foam glass aggregate for structural solutions in infrastructure construction and housebuilding.

Häme University of Applied Sciences, Forssa Campus

📍 5 km 🌐 www.hamk.fi/campuses-and-maps/forssa/?lang=en

Training programs for sustainable development and bio-based economy.

Price	€50/person, minimum €200/visit
Duration	1–1,5 hours
Language	FI
Schedule	Weekdays, not during holidays
Group size	5–20 people
Visitor group	Specialists in the field, those interested in recycling and circular economy.

Location	Voimalankatu 5, 30420 Forssa
Website	www.envor.fi
Contact Person	Mr. Samuli Laine
Contact information	+358 50 407 8099 samuli.laine@envor.fi



Uusioaines

Uusioaines is the largest processor of recycled glass in Finland, receiving approximately 70% of all recycled glass in Finland. Each year, the production facility in Forssa processes approximately 80 000 tons of recycled glass, which consists of glass used for packaging and various grades of flat glass. Glass is cleaned and colour separated to different glass cullet products for industrial uses.

The company uses the recycled material produced as the result of the process for manufacturing its own Foamit foam glass aggregate. Foamit was designed to be used as a lightening and insulation material for various structural solutions in infrastructure construction and housebuilding. Due to the foam cell structure, the product offers excellent thermal resistance and great hydraulic conductivity. Foamit is the only ecologically sustainable aggregate option on the market, and it offers significant reduction in the overall cost of construction projects; due to its light weight, the amount of product that can be transported is seven times that of stone aggregate, it allows for quicker construction processes, and the amount of work and equipment is reduced.

Your visit begins at the offices of Uusioaines in Jokioinen, with a presentation on the company's activities in the conference room. Next, you will be taken by car to the glass cleaning plant and the foam glass production facility, where you will learn more about the process in practice.

ADDITIONAL VISITS

Loimi-Hämeen Jätehuolto

📍 5 km 🌐 www.lhj.fi

A waste management company owned by 16 municipalities that offers various circular economy solutions and services.

Envor Group

📍 5 km 🌐 www.envor.fi

A private enterprise with activities in the circular economy and waste and property management sectors.

Saint-Gobain Finland / ISOVER

📍 5 km 🌐 www.isover.fi

An international manufacturer and supplier of insulation and construction materials.

Price	€120/group
Duration	1,5 hours
Language	FI/EN
Schedule	Weekdays, not during holidays
Group size	5–20 people
Visitor group	Recycling and circular economy specialists, construction companies, architects.

Location	Edvartintie 3, 31600 Jokioinen
Website	www.uusioaines.com/en
Contact Person	Ms. Katri Pohjola
Contact information	+358 50 439 8970 katri.pohjola@uusioaines.com



TECHNOLOGY AND MANUFACTURING

Comprehensive electronics and high technology services

Defense industry

Space technology



DA-Group

DA-Group is a Finnish technology company that designs and manufactures advanced electronics and high-technology solutions and products. The company's customers operate in various sectors, for example in the forest and paper industry, process industry, vehicle manufacturing industry, and the defense and space technology sectors.

DA-Group is a trusted partner for both domestic and international defense industry and armed forces with focus on underwater warfare, naval systems and combat survivability of warships, electronic warfare, and space situational awareness and intelligence. The company aims to remain a renewing, developing, and innovative specialist in challenging technological products – from the seabed to outer space.

The head office of the company employing 140 people is located in Forssa. During a visit to the company, you will learn about the company's activities and expertise. During the presentation, you will see some concrete examples of the company's products and have the opportunity to take a look at the operation of its production facilities from the upstairs viewing gallery. At the end of the tour, you can explore the underwater warfare exhibition on the company's premises, which was created together with Forum Marinum, the national Maritime Centre.

Price	€120/group, coffee and lunch service available as an additional service.
Duration	1 –1,5 hours
Language	FI/EN
Schedule	Weekdays, not during holidays
Group size	10–30 people
Visitor group	Specialists in the electronics and technology sectors, defense forces, potential customer companies.

Location	Kassimäenkatu 2, 30300 Forssa
Website	www.da-group.fi
Contact information	+358 29 080 0900 info@da-group.fi

ADDITIONAL VISITS

C.P.E. Production
 1 km www.cpe.fi
 Develops and manufactures ballistics riot control and training equipment.

Loimi-Hämeen Jätehuolto / Suomen Materiaalikierrätys
 6 km www.lhj.fi
 Recycling solutions for all electrical and electronic devices and scrap metal.

Robotics Campus, Riihimäki
 77 km www.roboticscampus.com/en
 A community for the expertise of the future that serves companies, students, and upskillers.



Trifami 3D

Trifami 3D is a start-up realizing a completely new construction concept. Trifami is the coordinator of the Circle Ecotrain® service package, which is based on new technologies, the right partners, and circular economy.

Trifami is developing a new method for reusing the materials resulting from building demolition processes, which are produced in vast quantities as part of reconstruction and new building. The company has actively engaged in research and pilot projects in order to identify new methods and technologies. Trifami has also successfully utilized demolition concrete aggregate as a material for recycled concrete through pilot projects.

The opportunities for reusing concrete provided by the new processes promote circular economy and sustainable construction, as well as reduce the emissions produced by the manufacturing of construction materials. The company believes the new technologies will revolutionize the whole industry. Trifami 3D produces construction solutions that will remain sustainable in the future as well.

During the visit, you will learn more about the story of Trifami 3D and the company's concept.

Price	€80/person
Duration	1,5 hours
Language	FI/EN
Schedule	All-year round
Group size	Minimum 10 people
Visitor group	Those interested in construction, construction-related technologies, and circular economy.

Location	Sibeliuksenkatu 9 A 12, 13100 Hämeenlinna
Website	www.trifami3d.fi/en
Contact Person	Ms. Reetta-Maria Tolonen-Salo
Contact information	reetta.tolonen-salo@trifami3d.fi

ADDITIONAL VISITS

Kiertokapula

8 km www.kiertokapula.fi/en

An area of circular economy where circular economy services and new innovative business activities are developed.

HAMK Tech Research Unit

4 km www.hamk.fi/hamk-tech

An educational institution developing solutions for the manufacturing industry, construction, and energy-efficiency.

HAMK Bio Research Unit

4 km www.hamk.fi/hamk-bio

The unit develops and researches solutions of bio-based economy for the purposes of sustainable production and the utilization of natural resources.



LeikkiSet

Approximately 2 billion euros have been invested in play and exercise areas in Finland, with the intention of looking after the wellbeing of people of varying ages. LeikkiSet is an award-winning company, and its vision is to be the Finnish market leader for playground and outdoor sports facility equipment as well as an international pioneer in the field. LeikkiSet has constructed more than 900 play, exercise, and recreational areas.

Using the latest technologies, LeikkiSet is able to resolve its customers' fundamental problem of producing better equipment for play areas and outdoor sports facilities. The company has also developed technologies that improve the inclusion of local residents, i.e., the future users of the play areas and sports facilities in the design process. Responsibility is also an important value for the company, and it can particularly be seen in its desire to create play areas and sports facilities that are equally suitable for everyone.

The company's registered office is in Forssa, where its administrative and product development activities are also located, along with storage facilities. A visit to the company comprises a presentation held in a conference room, followed by a look at the play area and sports facility equipment and their features in the showroom. A demonstration of the equipment at a school or park in the area can also be arranged.

Price	€50/person, free for potential customers.
Duration	1 –1,5 hours
Language	FI/EN
Schedule	Weekdays, not available in July.
Group size	10–40 people
Visitor group	Landscape and construction architects, specialists in the field.

Location	Lepistökatu 3, 30100 Forssa
Website	www.leikkiset.fi
Contact Person	Mr. Tomi Mäkilä
Contact information	+358 400 212 776 tomi.makila@leikkiset.fi

ADDITIONAL VISITS

Circular Economy Play Park Varsalaidun / Pilvenmäki Harness Racing Track

4 km www.pilvenmaki.fi/pilvenmaki-keskus/in-english
A playground featuring recycled outdoor play equipment.

Multi-function Center Akvarelli in Forssa

3 km

www.forssa.fi/kasvatus-ja-opetus/monitoimikeskus-akvarelli
A modern, expansive play and outdoor exercise area.



Aste Finland

Aste Finland was established in 2010, based on the ambition of five men to produce the world's finest commercial plug-in coolers. While the local history of manufacturing refrigeration equipment provided a good growth platform for the company, Aste Finland wanted to offer its customers even more.

Aste Finland designs high-quality commercial plug-in coolers, which can be easily customized based on the customer's wishes and requirements. The devices are manufactured inhouse and their environmental friendliness and durability are taken into account. Once the products leave the production facility, their long service life is ensured by offering a maintenance service and rebranding of the equipment based on the brands' development.

The company's roots and source of inspiration are firmly grounded in Finland, its nature, and the seasonal variation. Aste Finland is familiar with its customers' seasons, requirements, and wishes, and it is able to adapt and respond to them with perfect products. Aste Finland is a reliable partner to many international brands, and its commercial plug-in coolers and freezers have reached Scandinavia and the Baltic Countries, Central and Southern Europe, Middle East, Australia, and North America.

During your visit, you will learn about the company's products and tour the production facilities, exploring product testing and various phases of assembly.

Price	€120/group
Duration	1 hour
Language	FI/EN
Schedule	Weekdays, not during holidays
Group size	4–40 people
Visitor group	Specialists in the field, customers, school groups interested in entrepreneurship.

Location	Koskivuorenkatu 5, 30420 Forssa
Website	www.astecoolers.com
Contact Person	Mr. Jussi Salonen
Contact information	+358 50 342 7671 jussi.salonen@astecoolers.com

ADDITIONAL VISITS

Loimi-Hämeen Jätehuolto / Cool-Finland Oy

3 km www.lhj.fi

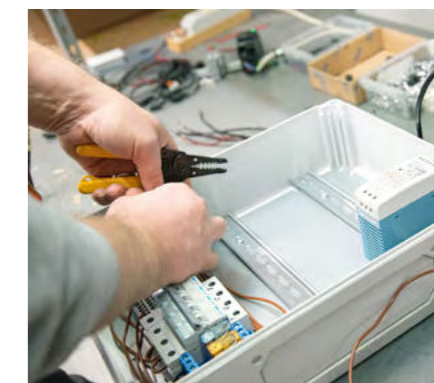
The leading recycler of refrigeration equipment in Finland.

Uusioaines

5 km www.uusioaines.com/en
Collects, cleans, and recycles glass and produces foam glass aggregate for structural solutions in infrastructure construction and housebuilding.

Coolcenter Forssa

6 km www.coolcenter.fi/en
Designs and manufactures automated collection units and lockers suitable for cold storage. The company also acts as a contract manufacturer.



Coolcenter Forssa

CoolCenter Forssa is an experienced and long-standing Finnish manufacturer of refrigeration equipment. The company designs and manufactures refrigeration equipment for its customers' varying needs under the WineQueen and CoolCenter brands.

The company also manufactures the automated CoolCollect pick-up and distribution units designed to respond to the changing consumer habits and online trade. The automated units are available in modular or wall-mounted configurations featuring various locking and smart control systems for both indoor and outdoor use. The company's range of products also includes CoolCellar lockers that offer a more ecological alternative for traditional cold storage rooms in apartment buildings and CoolLocker units offering individual cold storage.

The company manufactures wine coolers for both consumers and commercial purposes by hand under the WineQueen brand. The range has been awarded both the Key Flag Symbol and the Design from Finland marks as recognition of Finnish labor and responsible, user-oriented design.

In addition to the company's own products, you can also learn about current production processes for customer orders during your visit, which could include freezing toilets or cryotherapy pools intended to improve the recovery of top-level athletes, for example. This is made possible by the fact that CoolCenter Forssa also acts as a contract manufacturer of various refrigeration products.

Price	€50/person, minimum €200/group
Duration	1 hour
Language	FI/EN
Schedule	Weekdays, not during holidays
Group size	5–20 people
Visitor group	Specialists in the field, potential customers.

Location	Sipilänkatu 11, 30100 Forssa
Website	www.coolcenter.fi/en
Contact Person	Mr. Sauli Hakala
Contact information	+358 50 560 3114 sauli.hakala@coolcenter.fi

ADDITIONAL VISITS

Loimi-Hämeen Jätehuolto / Cool-Finland

8 km www.lhj.fi

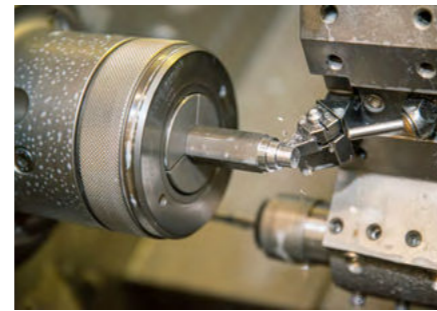
The leading recycler of refrigeration equipment in Finland.

Uusioaines

8 km www.uusioaines.com/en
Collects, cleans, and recycles glass and produces foam glass aggregate for structural solutions in infrastructure construction and housebuilding.

Aste Finland

6 km www.astecoolers.com
Designs and manufactures commercial refrigeration equipment.



CN Center

Metal industry is the largest industrial sector in Finland. It comprises the manufacturing of basic metals, metal products, other products, vehicles, and electrical devices, and the electronics industry.

CN Center produces metal components and configurations in a flexible and timely manner. CN Center bends sheet metal and tubing, providing a service that is genuinely customer oriented.

CN Center is a lively and growing metal sector operator with more than 20 years of experience. Customer-focus and environmental and social responsibility are emphasized in its activities. Flexible deliveries and cost-effective products are ensured by the self-sufficiency of CN Center's production and the versatile competence of its personnel. Design service supports the customers' product development work in order to improve manufacturing efficiency even further.

During your visit, you will learn about the production and facilities of CN Center.

Price	€40/person
Duration	1 hour
Language	FI/EN
Schedule	All-year round
Group size	Maximum 10 people
Visitor group	Those interested in industry, the metal sector, and the latest innovations.

Location	Käpälämäenkatu 11, 11710 Riihimäki
Website	www.cncenter.fi/en
Contact Person	Mr. Mika Kaseva
Contact information	+358 400 250 965 mika.kaseva@cncenter.fi

ADDITIONAL VISITS

Häme University of Applied Sciences, Riihimäki Campus

3 km www.kiertokapula.fi/en
Training programs for technology and traffic.

Robotics Campus, Riihimäki

2 km www.roboticscampus.com/en
A community for the expertise of the future that serves companies, students, and upskillers.

Delva

37 km www.delva.fi/en
Industrial metal 3D printing using the latest technologies.



Delva

Delva is an experienced specialist and partner for industrial metal printing. Delva offers a joint development process that goes beyond the surface in order to identify optimal solutions to the customer's individual needs. The company has access to a wide selection of materials, including various grades of steel, aluminum, titanium, Inconel, and copper.

3D printing introduces a new dimension alongside traditional manufacturing technologies, enabling completely new types of structures and solutions. Printing allows for a smaller carbon footprint throughout the product's life cycle as well as a versatile response to global sustainability challenges. It also reduces costs and shortens the delivery chain.

During your visit, you will learn about Delva, its facilities, and the machinery and equipment used for printing. You will also have the opportunity to observe the metal 3D printing process, which represents digital manufacturing at its finest. The possibilities of printing are demonstrated to visitors through various examples.

Price	€150/group for 1–10 persons, €250/group for 11–20 persons, €350/group for 21–30 persons.
Duration	1 hour
Language	FI/EN
Schedule	All-year round
Group size	Maximum 30 people
Visitor group	Those interested in industry, the metal sector, and the latest innovations.

Location	Laajamäentie 2, 13430 Hämeenlinna
Website	www.delva.fi/en
Contact Person	Ms. Marja-Leena Mäkinen
Contact information	+358 50 431 7034 marja-leena.makinen@delva.fi

ADDITIONAL VISITS

HAMK Tech Research Unit

4 km www.hamk.fi/hamk-tech
An educational institution developing solutions for the manufacturing industry, construction, and energy-efficiency.

Robotics Campus, Riihimäki

36 km www.roboticscampus.com/en
A community for the expertise of the future that serves companies, students, and upskillers.

Fixcel

2 km www.fixcel.fi/in-english
Ecological and adaptable buildings with clean indoor air built using Finnish innovation.

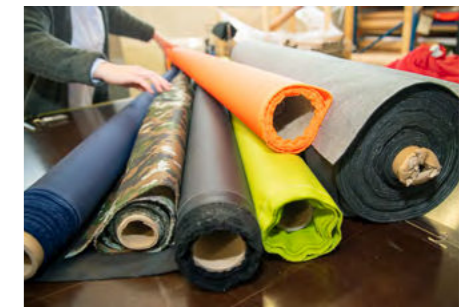


TEXTILES

Textile industry

Textile heritage in Finland

Textile innovations and research



Foxa

Foxa is a company established in 1990 that develops and manufactures fabrics for workwear, military applications, and outdoor clothing. The company's sales office, textile laboratory, and fabric warehouse are located in Forssa. Foxa represents a new concept in textile production, where the core competence is maintained near the customers, while manufacturing is located elsewhere. A well-equipped textile laboratory and skilled personnel enable effective quality control and product development.

Foxa offers the widest selection of workwear fabrics in its market. The versatile range includes textiles ranging from thin fabrics intended for medical staff clothing to certified fire-retardant fabrics. Various outdoor clothing fabrics and military textiles are also a key element of the company's product range.

During your visit, you will learn about Foxa as a company and its top-quality product development. After a presentation, you will take a tour of the company's premises and see how its test laboratory operates.

Price	€50/person, minimum €200/visit
Duration	1 hour
Language	FI/EN
Schedule	Weekdays, not during holidays
Group size	1–30 people
Visitor group	Operators and buyers in the textile industry.

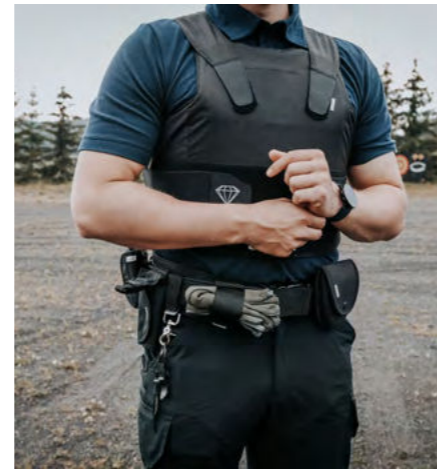
Location	Lepistökatu 2, 30100 Forssa
Website	www.foxa.fi/en
Contact Person	Ms. Johanna Rämö
Contact information	+358 10 229 2120 info@foxa.fi

ADDITIONAL VISITS

Oy Teema Line LTD
 2 km www.teemaline.fi
 Develops and manufactures shooting jackets and trousers for sport shooting.

C.P.E. Production
 4 km www.cpe.fi
 Develops and manufactures ballistics riot control and training equipment.

Rykkéri / Forssa Fabric
 3 km www.rykkeri.fi
 Textile printing using the only flatbed printing machine in operation in Finland. The company manufactures products under its own Rykkeri brand.



C.P.E Production

C.P.E. Production (Combat Protective Equipment) is one of the leading manufacturers of protective equipment in the world, and the roots of its product development are grounded in the field of ice hockey equipment. The company's products comprise a wide range of equipment designed for ballistic protection, crowd control, and exercise purposes as well as related accessories. Its customers include national defense forces, the police, prison and probation services, and elite counter-terrorism units throughout the world.

C.P.E. Production has been granted the ISO 9001 certification, and it has gained a reputation as a skilled manufacturer of high-quality technical solutions. To wit, the company engages in close cooperation with the end customer during product development to ensure that future threats can be anticipated. The company has manufacturing plants in Finland and the Czech Republic. In addition to production facilities, the company's head office, product development, marketing, and sales units are located in Forssa.

During the visit, you will first learn about the company's products and special competence- The company's production processes ranging from design to completed products are demonstrated in the production facilities. During your visit, you will also have the opportunity to observe the mechanical testing procedure for stab- and bulletproofing, as well as a protective equipment demonstration.

Price	The visit is free of charge
Duration	1,5 hours
Language	FI/EN
Schedule	Weekdays, not during holidays.
Group size	The production facilities can accommodate a maximum of 50 people and the conference room a maximum of 10 people.
Visitor group	Defense forces, ministries of defense and the interior, the police, prison service administration.
Location	Asentajankuja 3, 30300 Forssa
Website	www.cpe.fi
Contact Person	Mr. Harri Kolu
Contact information	+358 3 688 2920 +358 50 572 6103 harri.kolu@cpe.fi

ADDITIONAL VISITS

DA-Group

1 km www.da-group.fi

Designs and manufactures challenging electronics and high-technology solutions and products. The company's customers include defense technology operators.

Foxa

4 km www.foxa.fi

Develops and has fabrics designed for workwear, military applications, and outdoor clothing manufactured.

Rykkeri / Forssa Fabric

2 km www.rykkeri.fi

Textile printing using the only flatbed printing machine in operation in Finland. The company manufactures products under its own Rykkeri brand.



Oy Teema Line LTD

Established in 1984, the company develops and manufactures sport shooting clothing and accessories. Shooting jackets and trousers manufactured under the Kurt Thune brand are produced in Finland using high-quality materials and craftsmanship. Product development has a key role in the company's operation alongside pattern design, cutting, and sewing, while the extensive expertise and capacities for various textile industry processes also allows subcontracting.

The company has a dozen employees, and 92% of the production is exported, with retailers in more than 50 different countries.

During the visit, you will learn about the production facilities and processes of Oy Teema Line LTD, as well as the product development. After the tour, visitors will have the opportunity to try virtual shooting in the company's show room, which features a wide selection of other equipment designed for sport shooting.

The company is located in a historic textile mill near the center of Forssa.

Price	€120/group
Duration	1 hour
Language	FI/EN/DE/SV
Schedule	According to agreement
Group size	1–10 people
Visitor group	Operators and buyers in the textile industry.

Location	Kutomonkuja 2 E 1, 30100 Forssa
Website	www.teemaline.fi
Contact Person	Mr. Kurt Thune
Contact information	+358 44 710 4874 teemaline@thune.fi

ADDITIONAL VISITS

Foxa

2 km www.foxa.fi

Develops and has fabrics designed for workwear, military applications, and outdoor clothing manufactured.

C.P.E. Production

2 km www.cpe.fi

Develops and manufactures ballistics riot control and training equipment.

Forssa Museum and the Pattern Centre

1 km www.forssanmuseo.fi

A demonstration of the history of Finnish textile industry and printed fabric.



Nature

Well-being

Cultural heritage



WELLBEING AND NATURE

Iloranta

Iloranta is an old farm that has been updated to serve today's customers. Iloranta is located in the Finnish countryside, surrounded by woods on the shore of a clean lake. It is the perfect place to take a breather in the middle of hectic everyday life, which is why Iloranta specializes particularly on nature's impact on our wellbeing.

Comprehensive wellbeing consists of balance between the body and the mind. Calming nature, healthy food, versatile exercise, sauna, and sufficient rest are the best ways to reduce stress and improve overall wellbeing and happiness.

Iloranta offers robust expertise on how to make the environment and nature part of wellbeing, as well as an extensive specialist network of instructors and doctors specialized in natural and non-pharmacological treatments. The instructors specialized fields of expertise include, among other things, mindfulness-based therapies and the role of hormones on human wellbeing. The chemistry and physiology of love are a key part of wellbeing, allowing you to feel energetic and full of life.

During a visit to Iloranta, you will receive a versatile introduction to tools intended for the development and maintenance of comprehensive health and wellbeing with top experts in the field.

Price	6–9 persons: €1 200/person/ 4-day program 10–12 persons: €1 000/ person /4-day program
Duration	3–5 days
Language	EN
Schedule	August–June
Group size	6–12 people
Visitor group	Health and wellness sector professionals.

Location	Rukkoilantie 129, 14700 Hauho
Website	www.iloranta.fi/en
Contact Person	Mr. Samu Lescelius
Contact information	+358 40 513 1139 samu@iloranta.fi

ADDITIONAL VISITS

Aulanko Nature Activity Center
39 km www.luontoliikuntakeskus.fi/aulanko-nature-activity-center/
Information on moving in nature and physical and nature education to children and youths in particular.

Kaupunkikalastus
36 km www.kaupunkikalastus.fi/en
Arranges fishing trips along the Vanaja waterway in Hämeenlinna.

Vanai Bistro & Bastu
36 km www.vanai.fi/en
Offers a combined dining and sauna experience in the center of Hämeenlinna.



Pirteeks

Comprehensive wellbeing is one of the fastest growing trends. People are seeking both physical and mental wellbeing. Anu Kosonen from Pirteeks is a versatile specialist in the field of wellbeing. She is a trained nutritionist, stress management counselor, equine-assisted mindfulness (HeLMi) instructor, horticultural therapeutic counselor, Forest Mind instructor, and personal trainer.

Pirteeks is an oasis of wellbeing and encounters located in the forest of Loppi, that offers such services as bootcamps, mini silence retreats, and a forest gym. The diverse educational background of Anu Kosonen can also be seen in the services offered by Pirteeks: the range of services includes courses related to wellbeing at work and efficiency, recovery and motivation assessments, different diets, and comprehensive coaching packages – without forgetting the boot camp forest gym!

The visit begins with a lecture that may cover such themes as wellbeing from the forest, mindfulness, stress management, wellbeing from exercise, and a Finnish viewpoint on healthy nutrition. After the lecture, visitors move to the forest gym to exercise, recover, and experiment with wellbeing in practice.

Price	€500/group
Duration	Lecture 1–1.5 hours, workout 1 hour.
Language	FI/EN
Schedule	All-year round
Group size	2–15 people
Visitor group	Wellbeing professionals, HR, healthcare professionals, groups interested in wellbeing.

Location	Kieppirinne 15, 12750 Pilpala
Website	www.pirteeks.fi/in-english
Contact Person	Ms. Anu Kosonen
Contact information	+ 358 40 363 9289 anu.kosonen@pirteeks.fi

ADDITIONAL VISITS

Pelto-Seppälä Farm

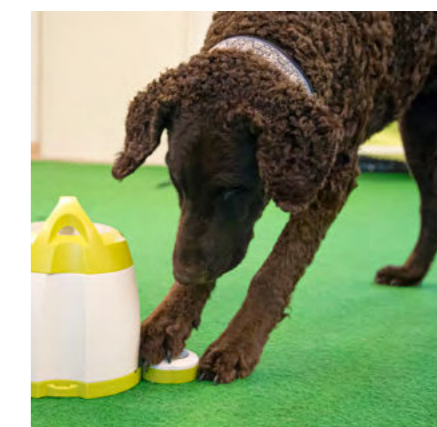
8 km www.peltoseppala.fi
A farm that is more than 300 years old with a shop selling locally produced food, cabin accommodation, and a horse stable.

Cardehumma

13 km www.cardehumma.fi
A horse stable and farm offering socio-educational and animal-assisted services.

SatuAasit

5 km www.satuaasintalli.fi
Versatile nature- and animal-assisted activities in a calm farm environment.



SmartDOG

SmartDOG is a specialist company in the canine sector that offers cognitive testing for dogs based on scientific research. Suitable for all dogs, the tests are based on the latest research and provide information on, among other things, the dog's ability to interpret the gestures of human, problem-solving methods and tenacity, self-control, memory, and logical reasoning.

SmartDOG was established on the basis of a desire to provide dog owners access to information in scientific publications – while simultaneously gathering data that helps regular dog owners.

A visit to SmartDOG includes a lecture discussing the SmartDOG testing and particularly on the training period required to become a licensed SmartDOG testers. The testing is also demonstrated in practice in the testing facility in Hyvinkää, where transport is arranged. The demonstration is carried out by Katriina Tiira Ph.D., the developer of SmartDOG and a docent of Animal Behavior Science. Katriina Tiira has more than 20 years of experience as an animal behavior scientist in the University of Helsinki.

Price	The demonstration is free of charge.
Duration	Lecture 1–2 hours and demonstration of dog testing 1.5 hours.
Language	FI/EN
Schedule	All-year round
Group size	5–10 people
Visitor group	Animal trainers and dog training school entrepreneurs interested in the subject matter.

Location	Riihimäki/Hyvinkää
Website	www.smartdog.fi/english
Contact Person	Ms. Katriina Tiira
Contact information	+358 44 972 9185 katriina@smartdog.fi

ADDITIONAL VISITS

The Hunting Museum of Finland

15 km www.metsastysmuseum.fi/english
Exhibits the ten-thousand-year history of Finnish hunting.

Pirteeks

30 km www.pirteeks.fi/in-english
Comprehensive wellbeing services in a natural environment.

SatuAasit

30 km www.satuaasintalli.fi
Versatile nature- and animal-assisted activities in a calm farm environment.



Ravitalli Tapio Mäki-Tulokas

Harness racing is the most important equestrian sport in Finland. Finland is unique among the harness racing countries due to the use of our own breed, the coldblooded Finnhorse, in competitions. The first organized harness racing competition in Finland was organized in 1817, and modern races began in the 1960s when warmblood breeds were allowed to compete and betting on the races grew in popularity.

Tapio Mäki-Tulokas is one of the top harness racing trainers in Finland, and his training stable for 30 horses is located in the idyllic countryside of Tammela. The stable is situated on the childhood farm of Mäki-Tulokas, and it features vast ranges and excellent training conditions. The region is also a unique area for horse and stable management, and it is home to the Pilvenmäki harness racing track, the Hippolis centre of excellence for the equine industry, the equine research activities of Natural Resources Industry Finland, and Ypäjä Equine College.

A harness racing trainer is responsible for ensuring that the horse remains healthy and willing to run and improving the horse's physical condition through various exercises. The activities are based on a horse-specific training program, which allows the trainer to maintain unique training loads. During a visit to the stable, you will learn more about the work of a harness racing trainer and both horses that are currently successful and future prospects.

Price	€50/person, minimum €200/group
Duration	1 hour
Language	FI/EN
Schedule	Weekdays, not during holidays
Group size	4–15 people
Visitor group	Those interested in harness racing and training, operators in the equine industry.

Location	Sukulantie 218, 30100 Forssa
Website	www.facebook.com/ravitallitapiomakitulokas
Contact Person	Ms. Annika Aalto
Contact information	+358 40 573 6206 annikaalto85@gmail.com

ADDITIONAL VISITS

Pilvenmäki Harness Racing Track and Equine Sports Centre 11 km

www.pilvenmaki.fi/pilvenmaki-keskus/in-english
A harness racing center that is open throughout the year comprising several privately run harness racing training stables.

Ypäjä Equine College

25 km www.hevosopisto.fi/en
A national training center for equine sports and the largest educational institution in its field.

Similä Riding Stables

7 km www.similanratsutila.fi
Riding school, camps, and courses as well as equine-assisted activities.

HANDCRAFTS AND DESIGN





Forssa Fabric / Rykkeri

Located in the striking and historic red-brick buildings of the former Forssa Spinning Mill, Forssa Fabric is a textile business run by four creative and enterprising women. Here at the birthplace of Finnish textile printing, Forssa Fabric offers its customers a unique textile printing service, carried out using the only hand-operated 20-meter printing table (silk screen printing/serigraphy) in Finland. Its customers include arts, fashion, and interior decoration professionals, designers, and associations. With the craft printing technique, customers are able to place smaller orders in a flexible manner.

Another key component of the company's range is its own Rykkeri brand, which is known for its high quality, unique designs, and bold color combinations. The Rykkeri collection includes women's clothes, men's shirts, accessories, interior decoration textiles, and fabric for clothing and interior decoration. The Rykkeri products are designed, printed, and manufactured in-house by hand in small batches. Responsibility is significantly emphasized in the selection and recycling of materials.

During your visit, you will learn about the history of textile printing and the company's operation. The actual printing process will be shown as part of a demonstration, and workshops can be organized for the visitors for an additional fee. The premises include a shop selling products from the Rykkeri collection, as well as selected products from other local craftspeople.

Price	€12/person
Duration	1 hour
Language	FI/EN
Schedule	According to agreement
Group size	4–50 people
Visitor group	Those interested in the textile industry and industrial history, designers, tourists.

Location	Puuvillakatu 4 C 3, 30100 Forssa
Website	www.rykkeri.fi
Contact Person	Ms. Karita Stenfors-Selkälä
Contact information	+358 400 484 478 karita@rykkeri.fi

ADDITIONAL VISITS

Forssa Museum and the Pattern Centre

2 km www.forssanmuseo.fi
A demonstration of the history of Finnish textile industry and printed fabric.

Oy Teema Line LTD

100 m www.teemaline.fi
Develops and manufactures shooting jackets and trousers for sport shooting.

Foxa

2 km www.foxa.fi
Develops and has fabrics designed for workwear, military applications, and outdoor clothing manufactured.



Wetterhoff

In Finland, crafts are both a highly popular pastime and a significant part of our cultural heritage. Many Finnish entrepreneurs earn their livelihoods from various craft trades. Crafts can also generate wellbeing in many ways.

The Wetterhoff House is a former handicrafts school established in Hämeenlinna in 1885 by Fredrika Wetterhoff. Fredrika Wetterhoff dedicated her life to educating impoverished girls, and her legacy is still seen in the activities of the Wetterhoff House. Today, the building is home to various creative professionals and provides the opportunity to experience and experiment with traditional methods of crafting in different workshops along with the Wetterhoff crafts shop.

During a visit, you will learn about the history of the house, the story of Fredrika Wetterhoff, and the important work of the Wetterhoff Foundation in maintaining the crafts traditions. Visitors will also be able to experience the joy of crafts personally in a workshop. The subject of the workshop is chosen in advance, and the group is provided the opportunity to knit, create a piece of jewelry, or work on their own miniature wall rug. Visitors will be able to take their crafts home with them, with instructions for completing the work. All workshops are suitable for both beginners and experienced craftspeople.

Price	€30–50/person (includes the workshop materials and instructions)
Duration	2 hours
Language	FI/EN
Schedule	Throughout the year on weekdays and Saturdays.
Group size	Minimum 6 people.
Visitor group	Adults interested in crafts and cultural heritage.

Location	Wetterhoffinkatu 4 D, 13100 Hämeenlinna
Website	www.wetterhoff.fi/wetterhoff-in-english
Contact Person	Ms. Hillevi Kaalenkaski
Contact information	+358 500 599 755 hillevi.kaalenkaski@wetterhoff.fi

ADDITIONAL VISITS

Iittala Glass Factory

350 m www.iittalavillage.fi/en
The only operational glass factory in Finland, where glass is still manufactured by hand.

HAMK Design Factory

14 km www.hamk.fi/design-factory/?lang=en
A multidisciplinary environment for product and service development of Häme University of Applied Sciences that brings students in contact with working life.

Inkala Manor

13 km www.inkalankartano.fi/en
The childhood home of Fredrika Wetterhoff, that is today used for conferences, accommodation, and celebrations.



Wirkkala Wallpaper / Culturelli

Wallpaper is to a house as growth rings are to trees! Old houses and their layered nature are at the heart of Culturelli's activities. With non-destructive reconstruction, the fragile ephemerality of layers of wallpaper has created a new way of restoration work. For decades, people have wanted to decorate their homes using wallpaper, and each new resident has marked the walls based on their idea of home. What fun it is to discover a stack of wallpaper at the backwall of a closet and browse through it. Wallpaper fragments are born again at Wirkkala Wallpaper.

The studio of Wirkkala Wallpaper is located in the center of Forssa, on an idyllic neighborhood of wooden houses. Working to order, conservator and master restorer Elina Wirkkala gives new life to old Finnish wallpaper patterns.

The process begins with copying the repeating pattern of the wallpaper, producing the screens or plates used for printing, and matching the colors. The actual printing is carried out manually, using traditional screen or plate printing techniques, or alternatively by printing the patterns that are first converted into digital files.

At the workshop, you can see the printing process and learn about the history of wallpaper. As an additional service, visitors have the opportunity to participate in a two-hour workshop where they are able to take part in the printing.

Price	€50/person
Duration	45 minutes
Language	FI/EN
Schedule	On weekdays
Group size	4–10 persons, the workshop accommodates a maximum of 4 people.
Visitor group	Those interested in interior decoration, renovations, and crafts.

Location	Ojakatu 1, 30100 Forssa
Website	www.culturelli.fi
Contact Person	Ms. Elina Wirkkala
Contact information	+358 40 510 1443 wirkkalawallpaper@gmail.com

ADDITIONAL VISITS

Rykkari / Forssa Fabric

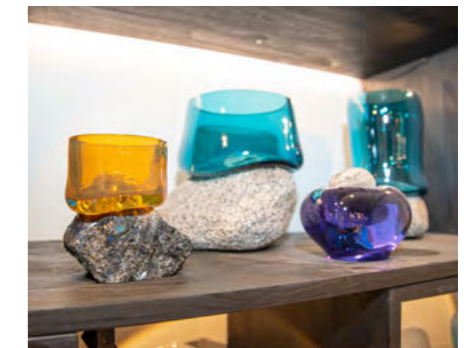
1 km www.rykkeri.fi
Textile printing using the only flatbed printing machine in operation in Finland. The company manufactures products under its own Rykkeri brand.

Forssa Museum and the Pattern Centre

1 km www.forssanmuseumo.fi
A demonstration of the history of Finnish textile industry and printed fabric.

Forssan Elävienkuvien teatteri

600 m www.elavienkuvienteatteri.fi
The oldest operating movie theater in Finland.



Lasistudio Mafka & Alakoski

Although glass manufacturing finished in Riihimäki in 1990, the town is still known for glass. Glass bottles, pots and jars, dishes, lamps, art pieces, and window glass were all produced in Riihimäki. Some items were produced manually, and others manufactured by machines. Glass is still alive in Riihimäki in the Mafka & Alakoski glass studio, for example.

At Glass Studio Mafka & Alakoski, you can see glass artists Marja Hepo-aho and Kari Alakoski at work. The glass studio also offers the opportunity to try glass blowing in a controlled setting and create your own glass art piece. The glass artists Hepo-aho and Alakoski work in the old Riihimäki glass factory, which means that you can experience actual glass history during your visit. The artists create utility articles, art pieces, and custom items.

During the visit, you will learn about glass blowing and have the opportunity to try it yourself. The visits are customized based on the group, and longer training sessions are also possible. Participants receive a certificate for completing a training session. At the glass studio, you can also learn about traditional glass blowing techniques.

Price	€700/Day or €3 200/5 days for seven persons.
Duration	1–5 days
Language	FI/EN/DE/FR
Schedule	All-year round
Group size	2–15 people
Visitor group	Previous experience of glass blowing is not necessary. Artists and designers, who are interested in working with glass.

Location	Lasitehtaanaukio 2, 11910 Riihimäki
Website	www.mafka-alakoski.fi/en
Contact Person	Ms. Marja Hepo-aho
Contact information	+358 40 554 9939 marja@mafka-alakoski.fi

ADDITIONAL VISITS

Finnish Glass Museum

400 m www.suomenlasimuseo.fi/english
Exhibits the history of Finnish glass and design.

Lasismi

0 m www.lasismi.fi/2022-en
Designs and produces glass object to order for private and corporate customers.

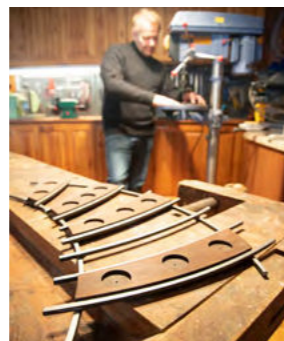
Iittala Glass Factory

58 km www.iittalavillage.fi/en
The only operational glass factory in Finland, where glass is still manufactured by hand.

Handcrafts

Design

Cultural heritage



Yoldia Scandinavia

The Hämeenlinna region has a strong tradition of design including, for example, the Iittala Glass Factory. Crafts have also played a key role in the history of Hämeenlinna, and the area has offered education for various design disciplines in a vocational school and a university of applied sciences.

Yoldia Scandinavia is a line of products based on this history and a strong story, comprising dishware and items for interior decoration. While the Yoldia Scandinavia line was launched in 2021, its story is based on the history of Lake Vanajavesi reaching back to the ice age. The products are primarily produced using stone wood and steel, with a form that is strongly representative of the Nordic nature. For the designer Jesse Kakkola, the creation of the line was a meaningful experience where history, nature, and the designer's personal story came together, producing the impressive Yoldia Scandinavia collection.

During your visit, you will learn about the story of the collection, which is physically grounded in the place where the designer's prototype workshop is located. An excellent destination for anyone interested in design, crafts, and history.

Price	€50/person
Duration	1–1,5 hours
Language	FI/EN/
Schedule	Throughout the year; summer and autumn are the best times to visit.
Group size	Maksimum 10 people
Visitor group	For those interested in design and cultural history.

Location	Poransaarentie 11, 13900 Hattula
Website	www.yoldiascandinavia.com/en
Contact Person	Mr. Jesse Kakkola
Contact information	+358 400 841 690 jesse.kakkola@koti-in.fi

ADDITIONAL VISITS

Wetterhoff

10 km www.wetterhoff.fi/wetterhoff-in-english
Combines various creative professionals and provides the opportunity to experience and experiment with traditional methods of crafting in different workshops.

HAMK Design Factory

14 km www.hamk.fi/design-factory/?lang=en
A multidisciplinary environment for product and service development of Häme University of Applied Sciences that brings students in contact with working life.

Iittala Glass Factory

22 km www.iittalavillage.fi/en
The only operational glass factory in Finland, where glass is still manufactured by hand.

Handcrafts

Design

Cultural heritage



Puista

Carpentry is a traditional Finnish trade, with typical areas of specialization including furniture, utility goods, and repair and restoration work. However, an even more specialized example of carpentry skills can be found next to Hämeenlinna in Janakkala, where equipment for games such as roulette are manufactured. Puista can produce almost anything on order, and the company works with the customers throughout the process, refining any idea into a well-functioning product!

During a visit, you will learn about Puista's activities and entrepreneurs, and the new, innovative projects they are working on. Puista specializes on creating high-quality gaming tables by hand, and also offers unique blackjack, poker, and roulette tables and other games based on customer orders.

In addition to the magnificent crafts tradition, visitors will be able to take a peek into the legendary world of gambling that is rich in tradition. The visit is crowned by a fun gaming experience, which can also be arranged based on agreement. The event is always designed based on the visitors' requests, making full use of the services and conference rooms, allowing for an unforgettable experience.

Price	Starting from €60/person
Duration	1 hour
Language	FI/EN
Schedule	All-year round
Group size	5–30 people
Visitor group	For those interested in crafts tradition and the event industry and games in particular.

Location	Irjalantie 51, 12400 Janakkala
Website	www.puista.com/en-gb
Contact Person	Ms. Sanna Virtanen
Contact information	+358 40 570 4470 sanna.virtanen@puista.com

ADDITIONAL VISITS

Ilosen puutyö

51 km www.ilonen.fi
Traditional carpentry, as well as laser cutting and printing on wood.

Wetterhoff

21 km www.wetterhoff.fi/wetterhoff-in-english
Combines various creative professionals and provides the opportunity to experience and experiment with traditional methods of crafting in different workshops.

Yoldia Scandinavia

30 km www.yoldiascandinavia.com/en
A line of products based on history and a strong story, comprising dishware and items for interior decoration.



Ilosen Puutyö

Ilosen Puutyö is a family-run business operating in Hauho in Hämeenlinna with more than 60 years of experience. The woodworking shop has long been producing high-quality and durable massive wood furniture and various wood products, which could even be found in the hunting lodge of Elizabeth II. The company is still known for skilled carpentry and the preservation of traditional skills are part of its business operation. Continuing the activities in the footsteps of his grandfather, Antti Teivonen is a Finnish Championship bronze medalist in furniture making.

New ways of using wood as an element and material have been introduced alongside the traditional methods. Ilosen Puutyö has developed inhouse competence and its services through laser cutting. A laser can be used to engrave the surface of wood or produce detailed and precise cuts. Another newly introduced service is printing on wood using modern technologies. This an ecological cutting-edge method of using wood as a material in a new way for large format printing in billboards, signs, and interior decoration panels.

During a visit, you will learn about the development and modernization of the company, have the opportunity to take a peek into the production facilities, and have some time for shopping in the Ilonen shop.

ADDITIONAL VISITS

Puista

51 km www.puista.com/en-gb
Traditional carpentry and games and casino tables as a specialty.

Delva

36 km www.delva.fi/en
Industrial metal 3D printing using the latest technologies.

HAMK Tech Research Unit

4 km www.hamk.fi/hamk-tech
An educational institution developing solutions for the manufacturing industry, construction, and energy-efficiency.



Nasty Puppet Promotions

Nasty Puppet Promotion is a specialist in puppet theatre and a significant international expert in the field. Nasty Puppet Promotions carves theatre puppets by hand and their manufacture itself is also considered a form of art.

Traditionally, puppet theatres have been educational and highlighted socially important subjects for discussion. Puppetry in Slovakia and Czechia are even included on Unesco's List of the Intangible Cultural Heritage of Humanity.

Traditional puppet theatre is a combination of manual skill and culture, which Nasty Puppet Promotions has brought up to date and introduced for use in team building, for example. Theatre allows the personnel to discuss current topics.

During a visit to Nasty Puppet Promotions, you will learn about the creation of theatre puppets and puppet theatre productions. In the workshops, visitors will participate in puppet theater. Visitors can come to the company's premises in Taidekasarmi in Hämeenlinna, or the program can be arranged elsewhere in the form of a workshop taking a couple of hours.

ADDITIONAL VISITS

Wetterhoff

2 km www.wetterhoff.fi/wetterhoff-in-english
Combines various creative professionals and provides the opportunity to experience and experiment with traditional methods of crafting in different workshops.

HAMK Design Factory

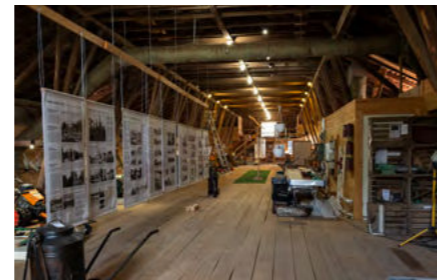
4 km www.hamk.fi/design-factory/?lang=en
A multidisciplinary environment for product and service development of Häme University of Applied Sciences that brings students in contact with working life.

Puista

21 km www.puista.com/en-gb
Traditional carpentry and games and casino tables as a specialty.

Price	€25/person, minimum €250/group
Duration	1,5 –2 hours
Language	FI/EN
Schedule	All-year round
Group size	10–60 people
Visitor group	Adults interested in crafts and cultural heritage, as well as groups of children.

Location	Miehistökatu 3 13130 Hämeenlinna
Website	www.nastypuppet.fi
Contact Person	Mr. Hannu Räisä
Contact information	+358 40 517 3177 hannu.raisa@gmail.com



Visit to Lepaa Winery and Petäys Resort

Lepaa is the garden and food industry campus of Häme University of Applied Sciences and Häme Vocational Institute. The Lepaa Manor dates back to the 13th century, and the campus was built around it in early 1900s. Lepaa has a long history and tradition in wine making. Communion wines were produced in Lepaa at the beginning of the 20th century, and the production of berry and fruit wines began when the horticultural college opened.

Today, Lepaa houses the leading training and research unit for the fruit wine sector in Finland, which produces a total of 17 000 liters of fruit wines, ciders, liqueurs, and distillates each year. From the end of 2022, brewing industry training is also provided at Lepaa, and a dedicated brewery will be opened at the site. Lepaa is one of 20 Finnish wineries.

During your visit, you will learn about the Lepaa manor grounds and its versatile plant life and sample patches, as well as the long and eventful history of the area. In addition to the winery's production facilities and processes, visitors will see the wine cellars and learn about the production of sparkling wine using the genuine champagne method. The tour culminates with a tasting of Finnish berry and fruit wines. Visitors are accommodated in Petäys Resort next to the winery.

Price	€87/person
Duration	1 day
Language	FI/EN
Schedule	All-year round
Group size	10–30 people
Visitor group	Those interested in foodstuffs, wine, and beer as well as food and gardening education.

Location	Petäyksentie 35, 14620 Hattula
Website	www.petays.fi/en
Contact Person	Mr. Juha-Pekka Tuominen
Contact information	+358 3 673 310 myynti@petays.fi

ADDITIONAL VISITS

Pekkola Farm – Bäätelö
 38 km www.pekkolantila.fi/in-english
 A sheep farm that even produces ice cream using sheep milk from the farm.

HAMK Mustiala Campus Farm
 70 km www.mustialanuomutila.fi/en
 The historic campus of Häme University of Applied Sciences comprises 185 hectares of fields and a modern, automated cow barn for approximately 70 cows.

Iittala Glass Factory
 31 km www.iittalavillage.fi/en
 The only operational glass factory in Finland, where glass is still manufactured by hand.



Brewery OlutMylly

Craft brewing activities have grown exponentially in Finland in recent years, and great beers are produced throughout the country. Anne and Mikko Silmälä opened their own microbrewery in Forssa in 2018. At first, the couple spent their free time on the brewery but with the growth of demand and production, they are now both employed by the company.

OlutMylly's range consists of ten or so locally produced craft beers, which have been influenced by Central European and British beers. The brewery's products are sold in about 50 municipalities in Finland, and the demand seems to be on the increase. The products of OlutMylly have also received positive mentions from many beer reviewers. The brewery engages actively in product development by designing and testing new recipes. The company also produces beers to order for its customers individual needs.

At the beginning of your visit, you will learn about craft beer production and its various processes in the brewing facilities. The tour continues with a tasting that provides an introduction to beer flavor profiles. As an additional service, the brewery can also offer light catering or provide the opportunity to enjoy sauna or have a get-together. The brewery tour is also an excellent complement to visits to other companies.

Price	€15/person
Duration	1 hour
Language	FI/EN
Schedule	Weekdays, not during holidays
Group size	2–16 people
Visitor group	Those interested in brewing, enthusiasts and experts, buyers.

Location	Yrittäjänkaari 17, 30420 Forssa
Website	www.olutmylly.fi
Contact Person	Ms. Anne Silmälä
Contact information	+358 50 556 6593 anne@olutmylly.fi

ADDITIONAL VISITS

Farm Butcher Shop Makuliha
 15 km www.makuliha.fi
 Produces specialty sausages, cold cuts, and various meat products.

Harjun Kuusipeurat
 29 km www.facebook.com/HarjunKuusipeurat
 Fallow deer farming, farm visits, and product sales.

Boreal Kasvinjalostus
 9 km www.boreal.fi/eng
 Breeds new varieties of field crops for use in Finland and other areas with similar conditions.



Kirsi's Chocolates

Kirsi's Chocolates produced handmade chocolates. The entrepreneur became captivated by chocolate when living in Switzerland and trained as a chocolatier in France, continuing to learn more about cocoa and chocolate-making around the world. After decades for working on her craft, she returned to Finland and began making chocolate treats in her native city Hämeenlinna.

Kirsi's Chocolates can also produce chocolates based on the customers' requests. In her kitchen, Kirsi Hyytiäinen experiments with new tastes open-mindedly, and combines local berries and herbs with chocolate. Kirsi is familiar with cocoa varieties from around the world, and her shop also offers tastings with coffee, tea, or wines.

During the visit, you can explore the wooden house from the 1800s where the chocolates are created. The building also houses a shop of local craftspeople, an art gallery, and a café. You can also combine the presentation or tasting with some other destination, where Kirsi will meet your group to tell you about chocolate.

Price	Starting from €20/person depending on the chosen chocolates.
Duration	0,5 – 1,5 hours
Language	FI/EN/DE/FR
Schedule	All-year round
Group size	2–15 people
Visitor group	Those interested in the food sector and crafts.

Location	Lukiokatu 4, 13100 Hämeenlinna
Website	www.kirsinsuklaat.fi/en
Contact Person	Ms. Kirsi Hyytiäinen
Contact information	+358 40 522 0376 chocokirsi@gmail.com

ADDITIONAL VISITS

Pekkola Farm – Bäätelö

41 km
www.pekkolantila.fi/in-english
A sheep farm that even produces ice cream using sheep milk from the farm.

Lammin sahti

37 km www.sahti.fi
The first microbrewery in Finland that focuses on sahti, a traditional Finnish type of unfiltered beer.

HAMK Lepaa Winery and Horticultural Farm

16 km www.hami.fi/lepaan-viinitila
The leading training and research unit for fruit wines in Finland.



Kultasuklaa

Located in the village of Iittala, Kultasuklaa is the oldest small-scale chocolate factory in Finland. The company produces chocolate products by hand, and it can also offer chocolates with the customer's logo and other specialty chocolate products to order. The company has introduced many new concepts to the sector, such as bulk sale of chocolate bars, and new flavors including strawberry, salted licorice, and gingerbread chocolate.

Kultasuklaa has invested in responsibility in various ways. It uses responsibly produced ingredients for its chocolate and aims to utilize domestically produced materials wherever possible.

During a visit, you will hear the story of Kultasuklaa and learn about the company's investment in responsibility, as well as have the opportunity to take a peek into the chocolate factory and taste its delicious products.

In addition to the chocolate factory, Iittala is home to many other crafts businesses as well. The largest of these is of course Iittala Glass Factory, where all Aalto Vases sold throughout the world are still made by hand, among other things. Tours of the glass factory are available, during which you can see glass blowers as they work. The area also has other crafts sector shops.

Price	€40/person, including a product package.
Duration	30 minutes
Language	FI/EN
Schedule	All-year round
Group size	5–10 people
Visitor group	Those interested in the food sector and design.

Location	Könnölänmäentie 2 D, 14500 Iittala
Website	www.kultasuklaa.fi/en
Contact Person	Mr. Juri Kaskela
Contact information	+358 50 374 2374 juri.kaskela@kultasuklaa.fi

ADDITIONAL VISITS

Iittala Glass Factory

350 m www.iittalavillage.fi/en
The only operational glass factory in Finland, where glass is still manufactured by hand.

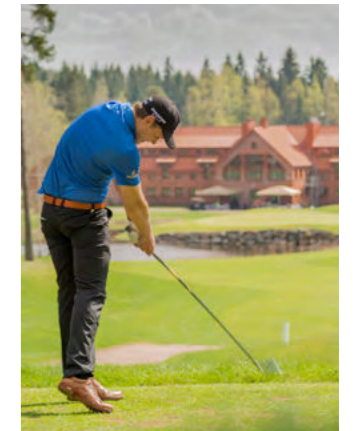
HAMK Bio Research Unit

27 km www.hamk.fi/hamk-bio
The unit develops and researches solutions of bio-based economy for the purposes of sustainable production and the utilization of natural resources.

HAMK Lepaa Winery and Horticultural Farm

24 km www.hami.fi/lepaan-viinitila
The leading training and research unit for fruit wines in Finland.

Recommendations by locals



Riihimäki Region

Accommodation

- Teatterihotelli Riihimäki**
www.teatterihotelli.fi/en
- Hotel Seuruhuone**
www.seuruhuone.fi/hotelli/shortly-in-english
- Loppi Wilderness Villa**
www.peaceandprivacy.travel/destinations
- Räyskälä Grand Villa**
www.peaceandprivacy.travel/destinations

Restaurants

- Teatterihotelli Riihimäki**
www.teatterihotelli.fi/en
- Restaurant Obelix**
www.obelixriihimaki.fi/briefly-in-english
- Lepolan talo**
www.lepolantalot.fi/in-english

Tourist Attractions

- Finnish Glass Museum**
www.suomenlasimuseo.fi/english
- The Hunting Museum of Finland**
www.metsastysmuseo.fi/english
- Riihimäki Art Museum**
www.riihimaentaidemuseo.fi/en
- Historical Museum of Riihimäki**
www.riihimaenkaupunginmuseo.fi/en

Activities

- Jalo sauna boat**
www.jalolautta.fi/english
- Pirteeks forest experiences**
www.pirteeks.fi/in-english
- The Räyskälä Aviation Centre**
www.rayskala.fi/english
- Flow Cosmetics Factory Outlet**
www.flowcosmetics.com/pages/factory-outlet
- Havi candle Factory Outlet**
www.havi.fi/english/outlets

Hämeenlinna Region

Accommodation

- Hotel Emilia**
www.hotelliemilia.fi/welcome-to-hotel-emilia
- Original Sokos Hotel Vaakuna**
www.sokoshotels.fi/en/hameenlinna
- Hotel Vanajanlinna**
www.vanajanlinna.fi/en/home
- Mylytalo**
www.mylytalo.fi/en
- Hostel Naurava Kulkuri**
www.nauravakulkuri.fi/en

Restaurants

- Ravinteli Vintti**
www.ravintelivintti.fi
- Restaurant Uoma**
www.ravintolauoma.fi/en
- Restaurant Piparkakkutalo**
www.ravintolapiparkakkutalo.fi/restaurant-piparkakkutalo
- Vanai Bistro & Bastu**
www.vanai.fi/en
- Le Blason**
www.sokoshotels.fi/en/hameenlinna/sokos-hotel-vaakuna/restaurant

Tourist Attractions

- Aulanko Nature Reserve**
www.nationalparks.fi/aulanko
- Medieval Häme Castle**
www.kansallismuseo.fi/en/haemeenlinna
- Laurinmäki area**
www.janakkala.fi/laurinmaki/en
- Holy Cross Church in Hattula**
www.hattulanseurakunta.fi/kirkot-ja-tilat/kirkot/pyhan-ristin-kirkko/holy-cross-church
- Iittala Glass Factory**
www.iittalavillage.fi/en/the-iittala-glass-factory

Activities

- Golf courses**
www.aulankogolf.fi/en
www.linnagolf.fi/en
www.visithame.fi/products/tawast-golf-course/en
- Ahvenisto sauna**
www.visithame.fi/products/traditional-public-sauna-by-the-lake-ahvenisto/en
- Tiirinkoski**
www.visithame.fi/products/tiirinkosken-tehdas-lifestyleshop-cafeteria/en
- Hopealinjat cruises**
www.hopealinjat.fi/en
- Kalpalinna Bike Park**
www.kalpalinna.fi/kalpalinna-in-english

Forssa Region

Accommodation

- Hotel Fabrik**
www.hotelfabrik.fi
- The wellness hotel Luppo**
www.hotelliluppo.fi/in-english
- Hotel Maakunta**
www.hotellimaakunta.fi
- Hunajakoto**
www.hunajakoto.com/in-english
- Eerikkilä Sport & Outdoor Resort**
www.eerikkila.fi/en

Restaurants

- Restaurant Villa**
www.ravintolavilla.fi
- Restaurant Gusto**
www.ravintolagusto.fi/en/home-en
- Hevossilta**
www.hevossilta.fi/en/restaurant
- Urpola Manor**
www.urpolankartano.fi/in-english
- Lounais-Hämeen Pirtti**
www.lounais-hameenpirtti.fi/english

Tourist Attractions

- Forssa Museum and the Pattern Centre**
www.forssanmuseo.fi
- Jokioinen Museum Railway**
www.jokioistenmuseorautatie.fi/en
- Agricultural exhibition park Elonkierto**
www.elonkierto.fi/en
- Tannery museum**
www.visithame.fi/products/tannery-museum/en
- The Liesjärvi and Torronsuo National Parks**
www.nationalparks.fi/liesjarvinp
www.nationalparks.fi/torronsuonp

Activities

- Spa Vesihelmi**
www.vesihelmi.fi
- Pilvenmäki harness racing racecourse**
www.pilvenmaki.fi/pilvenmaki-keskus/in-english
- Viking Sauna**
www.urpolankartano.fi/in-english/saunas
- Nature activities**
www.erarenki.fi/english
www.forestful.fi/english

visithame.fi/en



@visithame #visithame #technicalvisithame



Vipuvoimaa
EU:lta
2014–2020